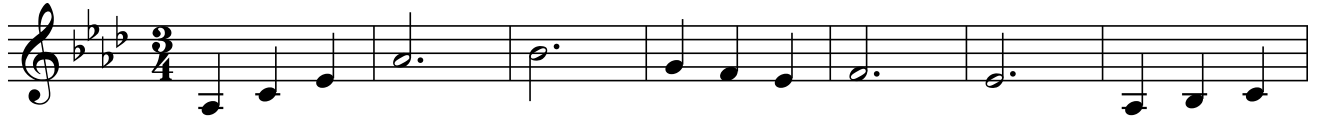




Morning has broken

Gesang

A \flat A \flat B \flat m E \flat D \flat A \flat A \flat



Morn-ing has bro - ken like the first mor - ning. Black-bird has

Cm Fm Cm B \flat E \flat A \flat Fm D \flat A \flat

8



spok - en like the first bird. _____ Praise for the sing - ing, praise for the

Fm B \flat E \flat A \flat D \flat E \flat A \flat

17



mor - ning. Praise for them, spring - ing fresh from the Word. _____